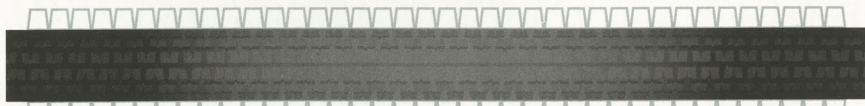
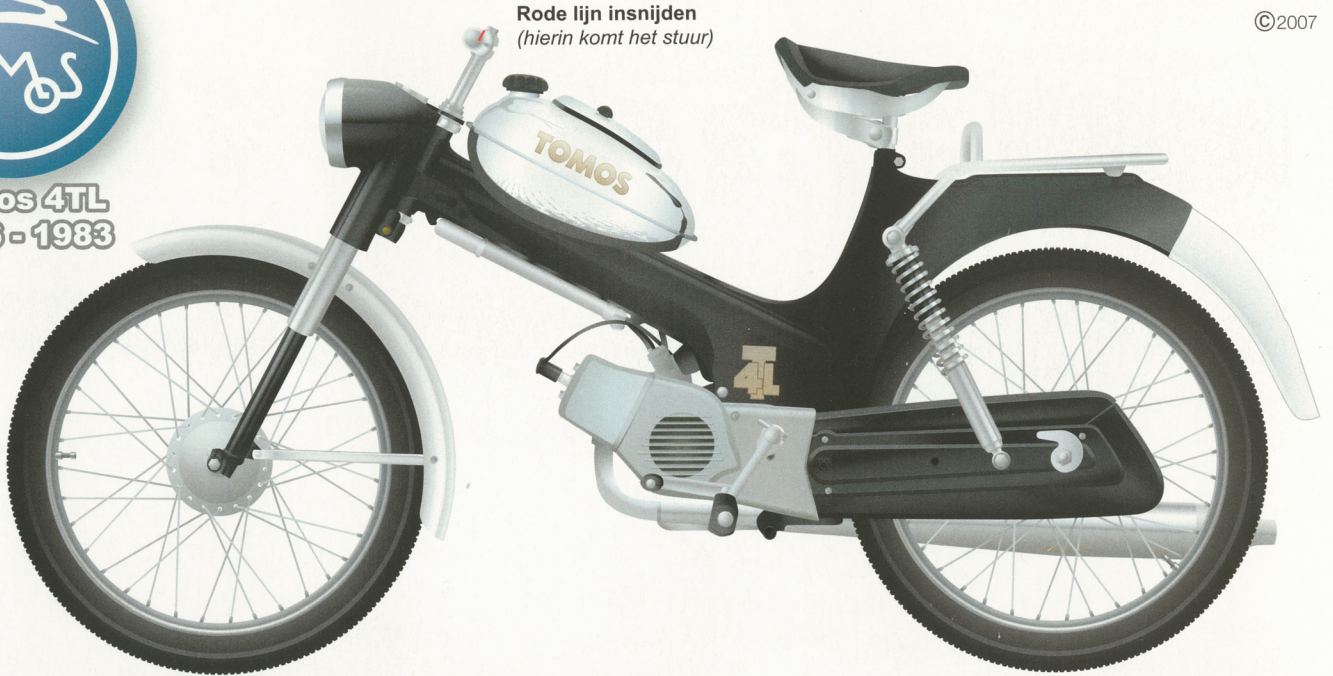


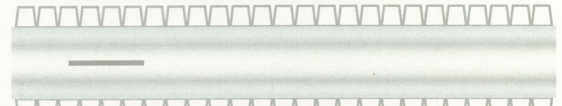


**Tomos 4TL**  
1976 - 1983

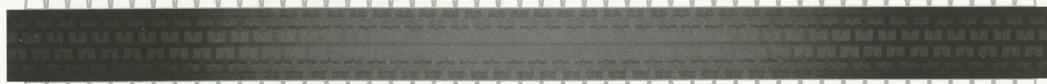
Rode lijn insnijden  
(hierin komt het stuur)



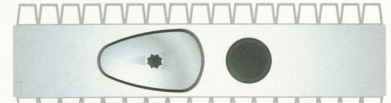
Voorband



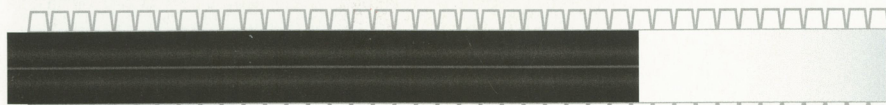
Voorspatbord (sleufje insnijden)



Achterband



Tank



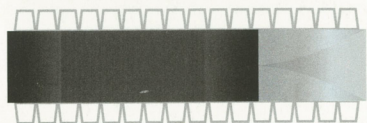
Frame (vanaf tank)



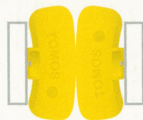
Kenteken



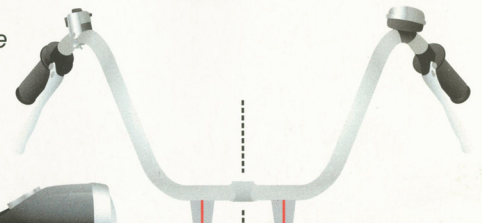
Koplamp (vouwen)



Zadel

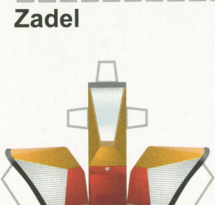


Geel Plaatje (witte randen door sleufje steken en naar buiten vouwen)



Rode lijn insnijden

Stuur (licht vouwen op stippelijntje en rode lijnen insnijden)



Achterlicht



Koplampglasje

